

## What you'll need

- Your NetID and Active Directory password (or, for guests, a guest ID and guest password)
- An AirPort Extreme wireless card (old AirPort cards from 2002 and earlier do not work)
- UIwpa2 wireless signal with good or excellent signal strength

## Need help?

More detailed documentation is available at <http://cites.uiuc.edu/wireless/wpa2>.

You can also contact the CITES Help Desk.

- Phone **217-244-7000**
- Email **consult@illinois.edu**
- Walk in at **1211 DCL**, 1304 W. Springfield, Urbana (from 8:30 a.m. to 5 p.m.)

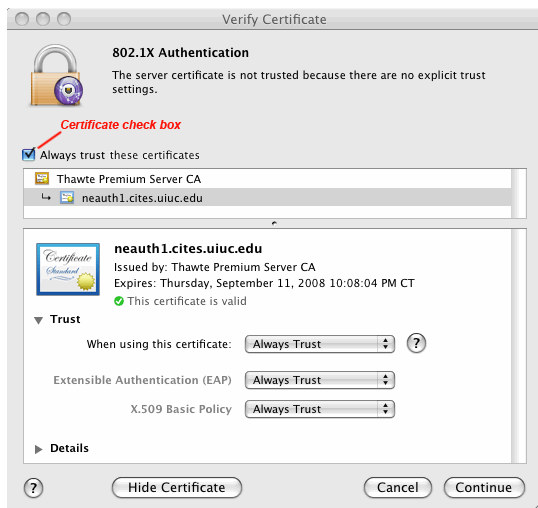
Please call in advance to make an appointment, and allow *at least* 30 minutes of time for the diagnosis and troubleshooting process.

## Getting connected

1. Select UIwpa2 under your AirPort icon



2. Log in with your NetID and Active Directory password (or your guest ID and password)



(If prompted about server certificate trust settings, usually on the first connection):

3. Click the **Show Certificate** button to show certificate details.
4. Select **Always trust these certificates** for **neauth1.cites.uiuc.edu** (or **neauth2.cites.uiuc.edu**).
5. Click **Continue**.

Once your authentication finishes, you're connected to the UIwpa2 service.